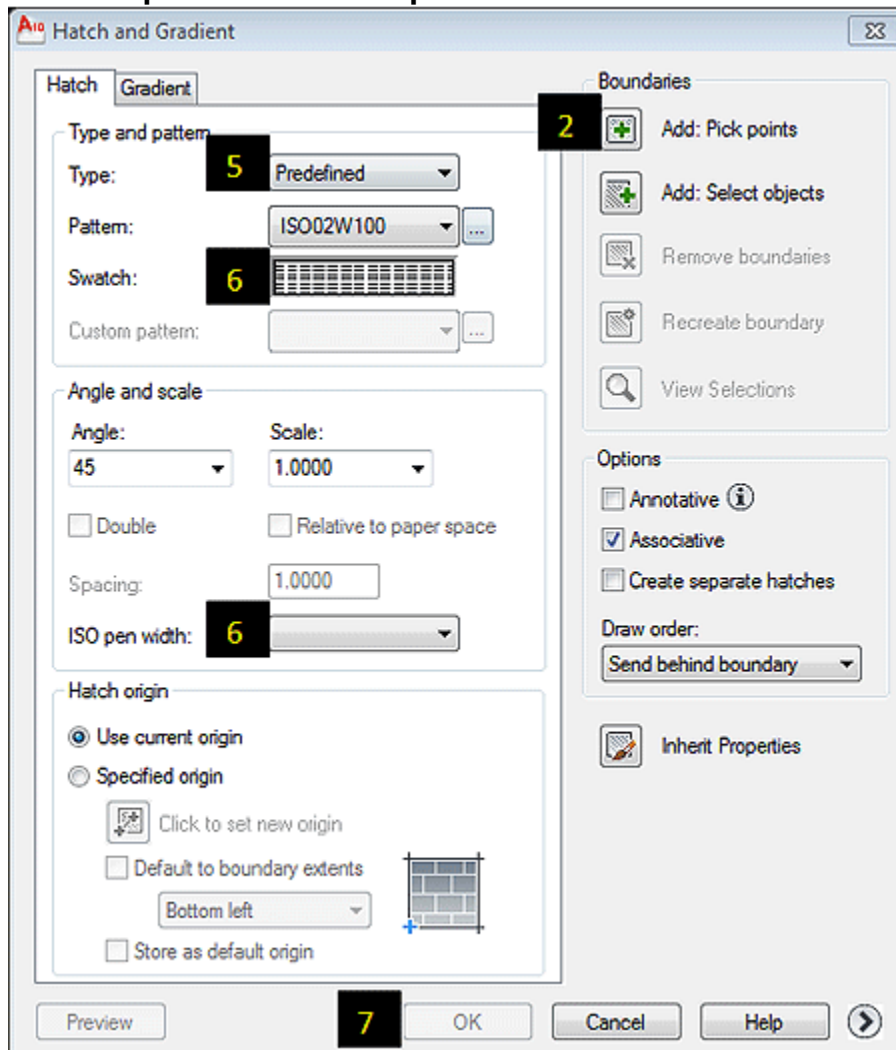



Creating AutoCAD Hatch Patterns:

When drawing objects you can use the hatch command to fill areas. It creates block patterns that can represent materials such as earth, insulations, or grass. You can also create solid fill the same way you create hatch patterns. Although AutoCAD comes with custom standard patterns, you can also create your own hatch patterns or use the external pattern library displayed in the hatch Pattern Palette dialogue box.

You can define a simple hatch pattern based on the current [linetype](#). You define the pattern by changing the angle and spacing of the hatch lines.

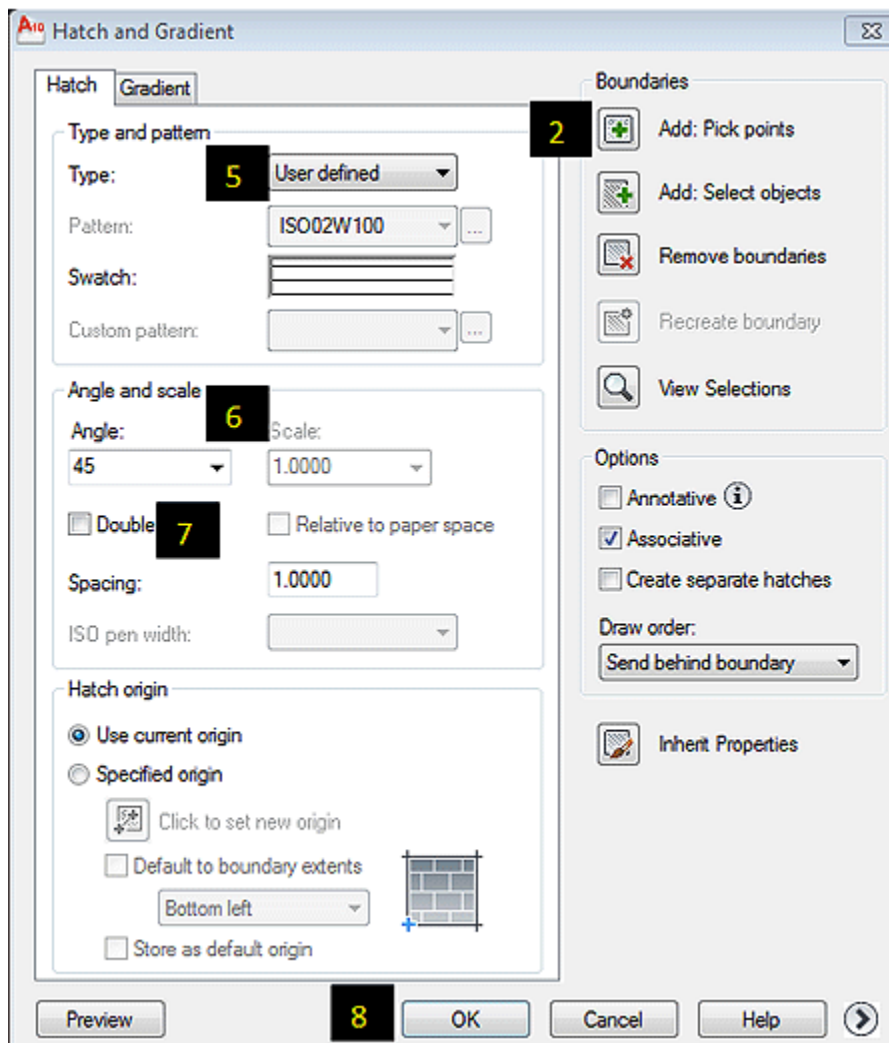
To use a predefined hatch pattern from AutoCAD




1. From the Draw Menu, choose **Hatch**  or type **Hatch** in the command prompt.
2. At the right of the Boundary Hatch and Gradient fill dialog box, choose **Pick Points** or **Select Objects**.

3. Specify an internal point for the hatch area or select the object.
4. Hit the **Tab bar** or press **Enter** to go back to the Hatch dialogue box.
5. Select **Predefined** in the Type box.
6. Select a **Pattern** From the Pattern box. *If you select an ISO pattern, you can specify a pen width, which determines the lineweight in the pattern.*
7. Choose **OK**.

To create User-Defined Hatch Patterns



1. From the Draw Menu, choose **Hatch**  or type **Hatch** in the command prompt.
2. At the right of the Boundary Hatch and Gradient fill dialog box, choose **Pick Points** or **Select Objects**.
3. Specify an internal point for the hatch area or select the object.
4. Hit the **Tab bar** or press **Enter** to go back to the Hatch dialogue box.

5. Select **User-defined** in the Type box.
6. Specify the angle and spacing of the hatch pattern.
7. Select **Double** to use intersecting lines in the pattern.
8. Choose **OK**.

If you need any further help, contact me using the [contact page](#) or visit the discussion forum site <http://www.2learncad.com/forum>.